



HOSHIZAKI

IM-24oNE / IM-24oWNE CUBE ICE MAKER

Product Description

The IM-24oNE (air cooled) and IM-24oWNE (water cooled) are the largest self contained cube ice machines. These models maintain low levels of water- and energy consumption.



- A closed water circuit offers the ultimate contamination protection, by reducing the number of points at which impurities can enter the ice making process.
- Hoshizaki ice makers are micro computer controlled, controlling the ice making process to perform at its best under varying circumstances, without having to make physical adjustments.
- A stainless steel exterior with integrated door handles provides a hygienic and high quality finish.
- Foam injected polyurethane for insulation (HFC free), helps preserve the quality and consistency of the ice produced, reducing the number of production cycles.
- An easily cleanable air filter allows end users to carry out a routine cleaning schedule, extending product life expectancy and reducing the frequency and costs of maintenance call-outs.
- Removable door gaskets help prevent any heat and contamination from entering the bin as well as making your Hoshizaki product easy to clean and maintain.

Available Models

IM-24oNE (Air Cooled)
IM-24oNE-23 (Air Cooled)
IM-24oWNE (Water Cooled)
IM-24oNE-21 (Air Cooled)
IM-24oWNE-23 (Water Cooled)

Ice Cubes

Model	Size	Shape
IM-24oNE/WNE	Large (Standard) 28 x 28 x 32 mm	
IM-24oNE-23	Medium / Large (23) 28 x 28 x 23 mm	

Bins

Model	Type of Bin	Max. Bin Capacity
IM-24oNE	Self contained	110kg
IM-24oWNE	Self contained	110kg

Production

Model	Ice Production per 24h (Dimple Size)	Temperature	Ice Production per Cycle	Water Consumption per 24h *
IM-24oNE	Approx. 240kg (15mm) / 230kg (5mm) Approx. 230kg (15mm) / 210kg (5mm) Approx. 210kg (15mm) / 195kg (5mm)	AT.10 °C, WT.10 °C AT.21 °C, WT.15 °C AT.32 °C, WT.21 °C	Approx. 3,2kg / 140pcs	Approx. 0,76m ³ Approx. 0,36m ³ Approx. 0,34m ³
IM-24oWNE	Approx. 240kg (15mm) / 230kg (5mm) Approx. 225kg (15mm) / 215kg (5mm) Approx. 215kg (15mm) / 205kg (5mm)	AT.10 °C, WT.10 °C AT.21 °C, WT.15 °C AT.32 °C, WT.21 °C	Approx. 3,2kg / 140 pcs	Approx. 0,76m ³ Approx. 0,37m ³ Approx. 0,36m ³

*) for ice making purposes only

Two year warranty

For more information visit our website at www.hoshizaki-europe.com
Hoshizaki Europe B.V. retains the right to change products and their specifications without prior notice.

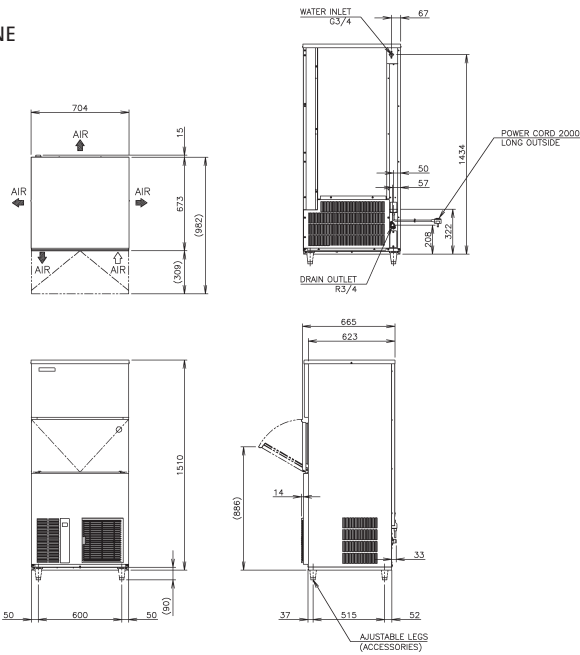




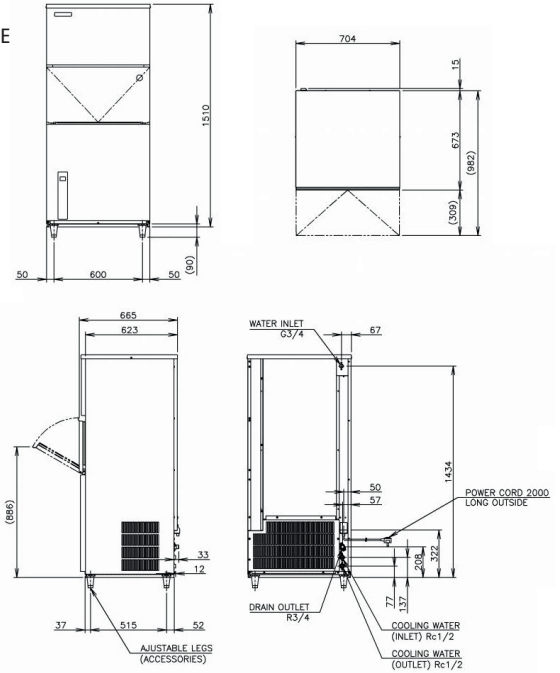
HOSHIZAKI

IM-24oNE / IM-24oWNE CUBE ICE MAKER

IM-24oNE



IM-24oWNE



Specification	IM-24oNE (Air Cooled)	IM-24oWNE (Water Cooled)
AC Supply Voltage	1 Phase 220-240V 50Hz	1 Phase 220-240V 50Hz
Amperage (AT.32°C, WT.21°C)	6,6A	6,3A
Electric Consumption (AT.32°C, WT.21°C)	1320W	1300W
Exterior	Stainless Steel, Galvanized Steel (Rear)	Stainless Steel, Galvanized Steel (Rear)
Insulation	Polyurethane Foam	Polyurethane Foam
Insulation Foam Blowing Agent	Water Blown	Water Blown
Connections-Electric	X-Type Con. (with CONT. Plug or UK Plug)	X-Type Con. (with CONT. Plug or UK Plug)
Connections-Water Supply	Inlet 3/4" (connected at rear side)	Inlet G3/4" (connected at rear side)
Connections-Drain	Outlet 3/4" (connected at rear side)	Outlet G3/4" (connected at rear side)
Ice Making System	Closed Cell type	Closed Cell Type
Condenser	Air-cooled, Fin and Tube type	Water-cooled, Tube and Tube type
Heat Rejection (AT.32°C, WT.21°C)	2870W	2850W
Refrigerant Control	Thermostatic Expansion Valve	Thermostatic Expansion Valve
Refrigerant Charge	R404A	R404A
Ice Making Control System	Thermistor, Timer	Thermistor, Timer
Bin Control System	Microswitch with Time Delay Board	Microswitch with Time Delay Board
Electrical Protection	Class I Appliance, 5A Fuse	Class I Appliance, 5A Fuse
Compressor Protection	Auto-reset Overload Protector	Auto- reset Overload Protector
Ice Maker Protection	Interlock by Controller Board	Interlock by Controller Board
Dimensions Product excl. Packaging	704 x 665 x 1510 (W x D x H, mm)	704 x 665 x 1510 (W x D x H, mm)
Dimensions Product incl. Packaging	840 x 785 x 1695 (W x D x H, mm)	840 x 785 x 1695 (W x D x H, mm)
Weight Gross / Net	122 kg / 111 kg	131 kg / 120 kg

Operation Requirements

Ambient Temperature	1 - 40°C
Water Supply Temperature	5 - 35°C
Water Supply Pressure	0,7-7,8 bar (0,07-0,78MPa)
Voltage Range	Rated Voltage ± 6%

Accessories

Scoop
Leg
Installation Kit



UK Office
2 The Technology Centre
London Road
Swanley
Kent BR8 7AG
United Kingdoms

T: +44 (0)845 456 0585
F: +44 (0)132 283 8331
uksales@hoshizaki.co.uk
www.hoshizaki.co.uk

T: +44 (0)132 261 6900
F: +44 (0)132 261 6901
info@gramuk.co.uk
www.gramuk.co.uk

Hoshizaki Europe B.V. Headquarters

Keienbergweg 50 C/D
1101 GC Amsterdam
The Netherlands

T: +31 (0)20 6918499
F: +31 (0)20 6918768

www.hoshizaki-europe.com
www.gram-commercial.com